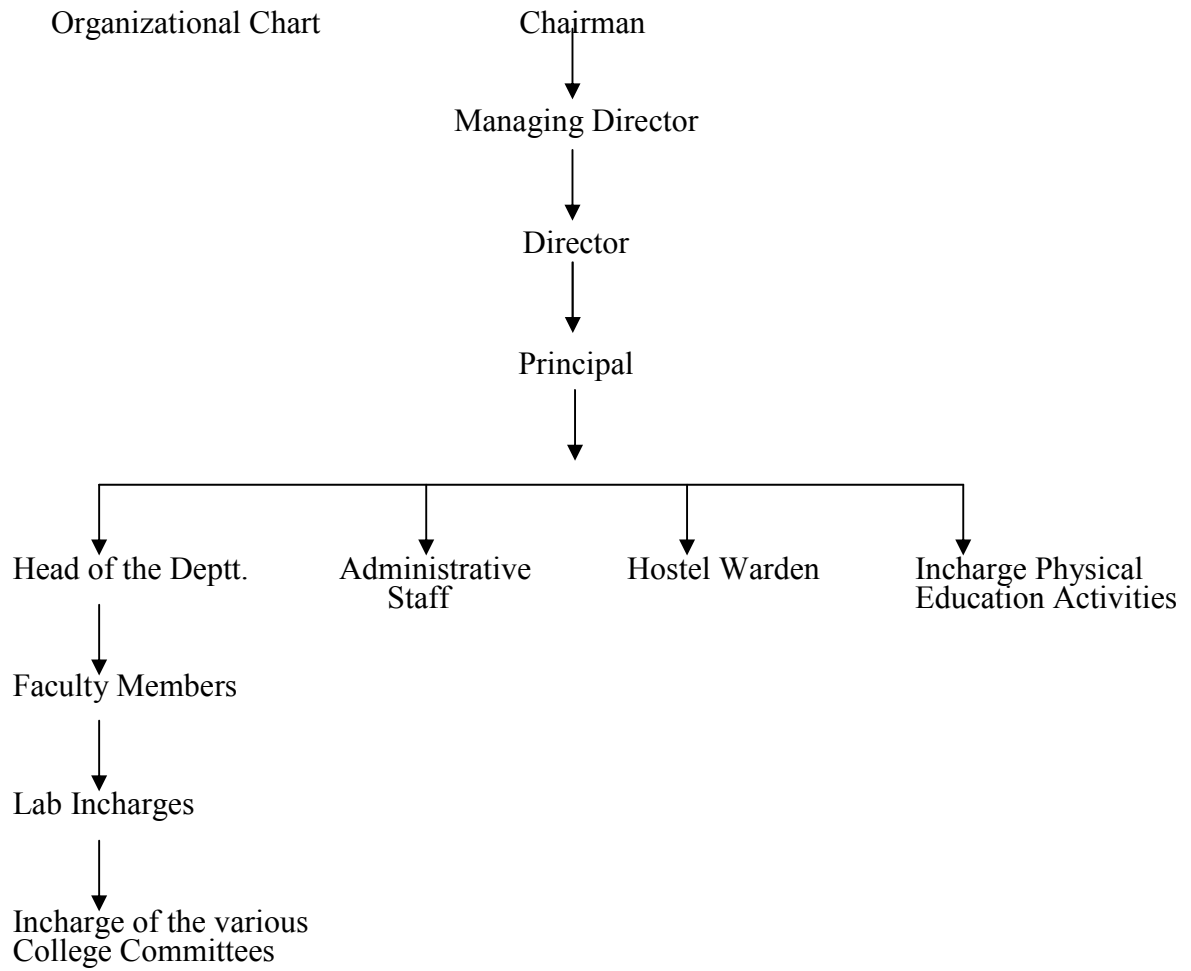


Mandatory Disclosure

Mandatory Disclosure	(Updated on) 22-02-2011.
1. AICTE File No.	765-65-003(NDEG)/ET/2001
Date & Period of Last Approval	23/08/2010 One Years (2010-2011)
2. Name of the Institution	Ludhiana College of Engineering & Technology Katani Kalan, Ludhiana.
Address of the Institution	Ludhiana College of Engg. & Tech, Chandigarh-Ludhiana Highway, V.P.O .Katani Kalan, Ludhiana.
City & Pin Code	141113
State / UT	Punjab
Longitude & Latitude	30 ⁰ 50'57.81'N 76 ⁰ 05'09.81'E
Phone number with STD Code	0161-2834750, 2834338, 3834307
Fax number with STD Code	0161-2834750, 2834338
Office Hours at the institution	9AM to 5PM
Academic hours at the institution	9 AM to 4:20 PM
Email	lcet02ludhiana@rediffmail.com
Website	www.lcetldh.com
Nearest Railway Station (dist in Km)	(Ludhiana) 25KM
Nearest Airport (dist in Km)	(Sahnewal) 12KM
3. Type of Institution	Private-Self Financed
Category (1) of the institution	Non Minority
Category (2) of the Institution	Co-Ed
4. Name of The organization running the institution	Vikas Educational Society (Regd),. Dhuri.
Type of the organization	Society
Address of the organization	Anaj Mandi, Dhuri, District-Sangrur. (Pb), Dhuri, Sangrur, Punjab, 48024.
Registered with	Adl. Registrar of Socities, Moga
Registration Date	4/8/2000
Website of the organization	www.lcetldh.com
5. Name of the affiliating University	Punjab Technical University,
Address	Kapurthala-Jalandhar Highway, Post Bag No.1, Kapurthala.

9. Organizational Chart



10	Student Feedback mechanism on Institutional Governance/ faculty Performance	Students feedback mechanism is already in place and it is used for corrective purposes
11	Grievance redressal mechanism For faculty, staff and students	College follows a proper hierarchical grievance redressal system. Students depending on the type of their grievance can forward it to student counselor, head of the departments or the Principal. Similarly faculty members can forward their grievances to their respective Head of the Department, Principal or the Management.
12	Name of the department	
(1)	Course	Automobile Engineering
	Level	UG
	1 st Year of Approval by the Council	2005
	Year wise Sanctioned Intake	CAY 30 CAY ₋₁ 30 CAY ₋₂ 30
	Year wise Actual Admissions	CAY 28 CAY ₋₁ 32 CAY ₋₂ 27
	Cut of Marks General quota	CAY Pass Marks CAY ₋₁ Pass Marks CAY ₋₂ Pass Marks
	% Students passed with Distinction	CAY 23 CAY ₋₁ 20 CAY ₋₂ -
	% Students passed with First Class	CAY 78 CAY ₋₁ 34 CAY ₋₂ -
	Students Placed	CAY 12 CAY ₋₁ 06 CAY ₋₂ -
	Average Pay package, Rs./Year	CAY 1.5 Lac CAY ₋₁ 1.5 Lac CAY ₋₂ 1.5 Lac
	Students opted for Higher Studies	CAY - CAY ₋₁ - CAY ₋₂ -
	Accreditation Status of the Course	Not Accredited

(2)	Course	Computer Science & Engineering		
	Level	UG		
	1 st Year of Approval by the Council	2002		
	Year wise Sanctioned Intake	CAY 120	CAY ₋₁ 120	CAY ₋₂ 120
	Year wise Actual Admissions	CAY 101	CAY ₋₁ 131	CAY ₋₂ 131
	Cut of Marks General quota	CAY Pass Marks	CAY ₋₁ Pass Marks	CAY ₋₂ Pass Marks
	% Students passed with Distinction	CAY 74	CAY ₋₁ 41	CAY ₋₂ 45
	% Students passed with First Class	CAY 25	CAY ₋₁ 37	CAY ₋₂ 46
	Students Placed	CAY 41	CAY ₋₁ 17	CAY ₋₂ 06
	Average Pay package, Rs./Year	CAY 1.8 Lac	CAY ₋₁ 1.8 Lac	CAY ₋₂ 1.8 Lac
	Students opted for Higher Studies	CAY -	CAY ₋₁ -	CAY ₋₂ -
	Accreditation Status of the Course	Not Accredited		
(3)	Course	Electronics & Communication Engineering		
	Level	UG		
	1 st Year of Approval by the Council	2002		
	Year wise Sanctioned Intake	CAY 120	CAY ₋₁ 120	CAY ₋₂ 90
	Year wise Actual Admissions	CAY 114	CAY ₋₁ 120	CAY ₋₂ 117
	Cut of Marks General quota	CAY Pass Marks	CAY ₋₁ Pass Marks	CAY ₋₂ Pass Marks
	% Students passed with Distinction	CAY 63.5	CAY ₋₁ 30	CAY ₋₂ 23
	% Students passed with First Class	CAY 36.5	CAY ₋₁ 36	CAY ₋₂ 46
	Students Placed	CAY 20	CAY ₋₁ 07	CAY ₋₂ 03
	Average Pay package, Rs./Year	CAY 2 Lac	CAY ₋₁ 2 Lac	CAY ₋₂ 2 Lac
	Students opted for Higher Studies	CAY -	CAY ₋₁ -	CAY ₋₂ -
	Accreditation Status of the Course	Not Accredited		
(4)	Course	Information Technology		
	Level	UG		
	1 st Year of Approval by the Council	2002		

Year wise Sanctioned Intake	CAY	90	CAY ₋₁	90	CAY ₋₂	90
Year wise Actual Admissions	CAY	50	CAY ₋₁	84	CAY ₋₂	84
Cut of Marks General quota	CAY	Pass Marks	CAY ₋₁	Pass Marks	CAY ₋₂	Pass Marks
% Students passed with Distinction	CAY	71.42	CAY ₋₁	100	CAY ₋₂	00
% Students passed with First Class	CAY	28.57	CAY ₋₁	00	CAY ₋₂	00
Students Placed	CAY	23	CAY ₋₁	10	CAY ₋₂	01
Average Pay package, Rs./Year	CAY	1.9 Lac	CAY ₋₁	1.9 Lac	CAY ₋₂	1.9 Lac
Students opted for Higher Studies	CAY	-	CAY ₋₁	-	CAY ₋₂	-
Accreditation Status of the Course	Not Accredited					

(5)	Course	Mechanical Engineering					
	Level	UG					
	1 st Year of Approval by the Council	2002					
	Year wise Sanctioned Intake	CAY	60	CAY ₋₁	60	CAY ₋₂	60
	Year wise Actual Admissions	CAY	58	CAY ₋₁	65	CAY ₋₂	64
	Cut of Marks General quota	CAY	Pass Marks	CAY ₋₁	Pass Marks	CAY ₋₂	Pass Marks
	% Students passed with Distinction	CAY	22.72	CAY ₋₁	33	CAY ₋₂	04
	% Students passed with First Class	CAY	77.27	CAY ₋₁	30	CAY ₋₂	.37
	Students Placed	CAY	23	CAY ₋₁	19	CAY ₋₂	11
	Average Pay package, Rs./Year	CAY	1.7 Lac-	CAY ₋₁	1.7 Lac	CAY ₋₂	1.7 Lac
	Students opted for Higher Studies	CAY	-	CAY ₋₁	-	CAY ₋₂	-
	Accreditation Status of the Course	Not Accredited					

(6)	Course	Electronics & Communication Engineering					
	Level	PG					
	1 st Year of Approval by the Council	2008 (1 st Batch is completing this year)					
	Year wise Sanctioned Intake	CAY	18	CAY ₋₁	18	CAY ₋₂	0
	Year wise Actual Admissions	CAY	14	CAY ₋₁	13	CAY ₋₂	0
	Cut of Marks General quota	CAY	Pass Marks	CAY ₋₁	Pass Marks	CAY ₋₂	Pass Marks
	% Students passed with Distinction	CAY	0	CAY ₋₁	-	CAY ₋₂	-

	% Students passed with First Class	CAY 66	CAY ₋₁ -	CAY ₋₂ -
	Students Placed	CAY -	CAY ₋₁ -	CAY ₋₂ -
	Average Pay package, Rs./Year	CAY -	CAY ₋₁ -	CAY ₋₂ -
	Students opted for Higher Studies	CAY -	CAY ₋₁ -	CAY ₋₂ -
	Accreditation Status of the Course	Not Accredited		
(7)	Course	MBA		
	Level	UG		
	1 st Year of Approval by the Council	2005		
	Year wise Sanctioned Intake	CAY 60	CAY ₋₁ 60	CAY ₋₂ 60
	Year wise Actual Admissions	CAY 25	CAY ₋₁ 33	CAY ₋₂ -
	Cut of Marks General quota	CAY <small>Pass Marks</small>	CAY ₋₁ <small>Pass Marks</small>	CAY ₋₂ <small>Pass Marks</small>
	% Students passed with Distinction	CAY 33.3	CAY ₋₁ 60	CAY ₋₂ -
	% Students passed with First Class	CAY 62.7	CAY ₋₁ 31	CAY ₋₂ -
	Students Placed	CAY 36	CAY ₋₁ 18	CAY ₋₂ -
	Average Pay package, Rs./Year	CAY 2.4 Lac	CAY ₋₁ 2.3 Lac	CAY ₋₂ 2.5 Lac
	Students opted for Higher Studies	CAY -	CAY ₋₁ -	CAY ₋₂ -
	Accreditation Status of the Course	Not Accredited		
(8)	Course	MCA (No batch yet passed out)		
	Level	UG		
	1 st Year of Approval by the Council	2008		
	Year wise Sanctioned Intake	CAY 60	CAY ₋₁ 60	CAY ₋₂ 60
	Year wise Actual Admissions	CAY 10	CAY ₋₁ 08	CAY ₋₂ 06
	Cut of Marks General quota	CAY <small>Pass Marks</small>	CAY ₋₁ <small>Pass Marks</small>	CAY ₋₂ <small>Pass Marks</small>
	% Students passed with Distinction	CAY -	CAY ₋₁ -	CAY ₋₂ -
	Students Placed	CAY -	CAY ₋₁ -	CAY ₋₂ -
	Average Pay package, Rs./Year	CAY -	CAY ₋₁ -	CAY ₋₂ -
	Students opted for Higher Studies	CAY -	CAY ₋₁ -	CAY ₋₂ -
	Accreditation Status of the Course	Not Accredited		

Doctoral Course	No
Foreign Collaboration, if any	Nil
Professional Society Membership	Yes (ISTE)
Professional activities	Yes
Consultancy activities	Yes
Grants fetched	Nil
Departmental Achievements	Yes
Distinguished Alumni	Nil

13. Faculty Bio-data Performa's in specified format are attached herewith.

14. Admission quota#

Entrance test / admission criteria	CET/AIEEEE/10+2 Marks (merit list) /MET/MAT/CAT
Cut off / last candidate admitted	40%
Fees in rupees	22500/- Tuition Fee.
Number of Fee Waivers offered	10% of Actual approved intake
Admission Calendar	June to October
PIO quota	No

15. Infrastructural Information



Class room / Tutorial Room facilities



Laboratory details



Computer Centre facilities



Library facilities



Auditorium / Seminar Halls / Amphi



Cafeteria



Indoor Sports facilities



Outdoor Sports facilities



Gymnasium facilities



Facilities for disabled

Nil

Any other facilities



16 Boys Hostel



Girls Hostel



Medical & other Facilities at Hostel



17	<p>Academic Sessions</p> <p>Examination system, Year / Sem</p> <p>Period of declaration of results</p>	<p>August to December, January to June</p> <p>Semester wise.</p> <p>within 2 months from the end of exam.</p>
18	<p>Counselling / Mentoring</p> <p>Career Counselling</p> <p>Medical facilities</p> <p>Student Insurance</p>	<p>Yes</p> <p>Yes</p> <p>Yes</p> <p>Nil</p>
19	<p>Students Activity Body</p> <p>Cultural activities</p> <p>Sports activities</p> <p>Literacy activities</p> <p>Magazine Newsletter</p> <p>Technical activities / TechFest</p>	<p>Yes</p> <p>Yes</p> <p>Yes</p> <p>Yes</p> <p>Yes</p> <p>Yes</p>

	Industrial Visits / Tours	Yes
	Alumni activities	Yes
20	Name of the Information Officer for RTI	Mr. V.K. Chadha
	Designation	Professor
	Phone number with STD code	0161-2834750, 2834307
	FAX number with STD Code	0161-2834750
	Email	lcet02ludhiana@rediffmail.com